



# William T. Dwyer High School IB Diploma Programme

A photograph of two young women in a classroom. One woman with blonde hair tied back is leaning over a desk, smiling at a laptop. The other woman with long blonde hair is sitting at the desk, also smiling and looking at the laptop. The background shows a brick wall and a window.

## **So what exactly is the International Baccalaureate?**

*"... The International Baccalaureate (IB) is a not-for-profit\* foundation, motivated by its mission to create a better world through education"*



...The **International Baccalaureate** aims to develop **inquiring, knowledgeable** and **caring** young people who help to create a better and more **peaceful** world through **intercultural** understanding and **respect**...



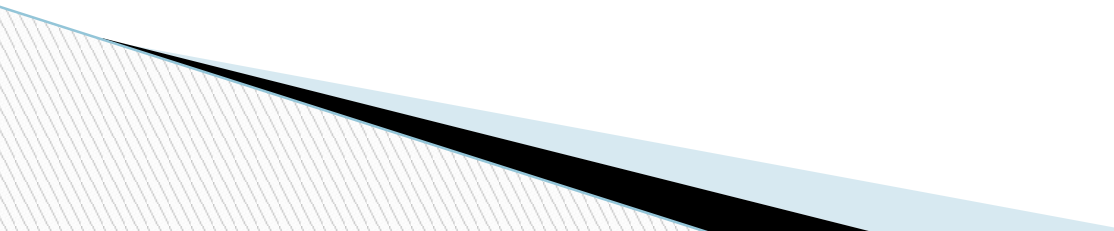
*... programmes **encourage** students across the world to become **active, compassionate** and **lifelong learners** who **understand** that other people, with their differences, can also be right....*

# **So what exactly is the International Baccalaureate Programme?**

The International Baccalaureate Programme is a cohesive and comprehensive course of study that emphasizes international-mindedness and inquiry-based learning.

## **What does that mean?**

Students in the IB Diploma Programme study six subject areas, and complete three core elements, in an environment that encourages constant questioning and a multicultural perspective.



# The curriculum contains six subject groups and a three-part core.



Students study concurrently:

- three subjects at higher level HL (240 hours each).
- three subjects at standard level SL (150 hours each).
- all three parts of the core.
- Students have a choice of the courses and levels at which they study some of the subjects.

# What is the Diploma Programme?



The IB Diploma Programme is designed as an academically challenging and balanced programme of education with final examinations that prepares students for success at the university level and life beyond.

# How do International Baccalaureate classes measure up against other high school course offerings?

-Regular Courses

-Honors Courses

vs.

-Advanced Courses

-AP Courses

-AICE Courses

-IB Courses

Regular courses provide unweighted course grades; A = 4.0

Honors (including Pre-IB and Pre-AICE) are weighted on a 4.5 scale

Advanced courses are weighted on a 6.0 scale



## **What kind of personal growth is encouraged for an International Baccalaureate student?**

Throughout their coursework and their time at William T. Dwyer, IB students are encouraged to embody all aspects of the IB Learner Profile.

## **What is the IB Learner Profile?**

The IB Learner Profile is a list of attributes that embody a well-rounded, inquisitive thinker.



# IB learner profile

Is the IB Mission Statement translated into a set of learning outcomes.

As IB learners we strive to be:

- inquirers
- knowledgeable
- thinkers
- communicators
- principled
- open-minded
- caring
- risk-takers
- balanced
- reflective



IB students are encouraged to achieve all aspects of the Learner Profile in all of their courses, and throughout the core elements.

# How do we structure the International Baccalaureate Programme throughout your four years of high school?

The IB Diploma Programme is a two-year program for students in 11<sup>th</sup> and 12<sup>th</sup> grade.

During these two years students will complete six IB courses and the three additional core elements of the program: TOK, the Extended Essay, and CAS

Our four year program includes 9<sup>th</sup> and 10<sup>th</sup> grade courses that are designed to prepare students for success in the Diploma Programme. For the most part, IB freshman and sophomores attend all classes with their IB cohort group.

## PRE-IB

9TH

10TH

ENGLISH	AICE GENERAL PAPER AS	AICE ENGLISH LANGUAGE AS
WORLD LANGUAGE	PRE-IB SPANISH PRE-IB FRENCH (LEVEL 1 OR 2)	PRE-IB SPANISH PRE-IB FRENCH (LEVEL 2 OR 3)
INDIVIDUALS & SOCIETIES	AP HUMAN GEOGRAPHY AP COMPUTER SCIENCE AICE BUSINESS AS AICE THINKING SKILLS	PRE-IB ECONOMICS & AP US GOVERNMENT
SCIENCE	PRE-IB BIOLOGY	PRE-IB CHEMISTRY
MATH	ALGEBRA 1 HON* GEOMETRY HON ALGEBRA 2 HON AP PRECALCULUS	GEOMETRY HON* ALGEBRA 2 HON AP PRECALCULUS AP CALCULUS AB
ELECTIVE	ELECTIVE	AP US HISTORY
ELECTIVE	ELECTIVE	ELECTIVE

\*IB STUDENTS MUST COMPLETE ALGEBRA 2 HONORS PRIOR TO THE START OF 11TH GRADE. STUDENTS ENROLLING IN ALGEBRA 1 HONORS DURING 9TH GRADE CAN CHOOSE TO COMPLETE GEOMETRY HONORS ON FLVS OR ENROLL IN BOTH GEOMETRY HONORS AND ALGEBRA 2 HONORS DURING 10TH GRADE.



## DIPLOMA PROGRAMME

11TH

12TH

ENGLISH	AP ENGLISH LITERATURE	IB ENGLISH LITERATURE HL
WORLD LANGUAGE	IB SPANISH SL/HL IB FRENCH SL	IB SPANISH SL/HL IB FRENCH SL
INDIVIDUALS & SOCIETIES	AICE INTERNATIONAL HISTORY AS	IB HISTORY OF EUROPE HL
SCIENCE	IB BIOLOGY SL/HL IB CHEMISTRY SL/HL IB ENVIRONMENTAL SYSTEMS SL AP PHYSICS	IB BIOLOGY SL/HL IB CHEMISTRY SL/HL IB ENVIRONMENTAL SYSTEMS SL IB PHYSICS SL
MATHEMATICS	IB MATH: APPLICATIONS & INTERPRETATION 1 SL IB MATH: ANALYSIS & APPROACHES 1 SL AP CALCULUS BC	IB MATH: APPLICATIONS & INTERPRETATION 2 SL IB MATH: ANALYSIS & APPROACHES 2 SL
ELECTIVE	IB BUSINESS SL/HL IB PSYCHOLOGY SL/HL IB VISUAL ARTS SL/HL	IB BUSINESS HL IB PSYCHOLOGY HL IB VISUAL ARTS SL/HL
CORE	THEORY OF KNOWLEDGE	THEORY OF KNOWLEDGE

### DIPLOMA PROGRAMME ADDITIONAL REQUIREMENTS:

- CREATIVITY, ACTIVITY, SERVICE (CAS)
- EXTENDED ESSAY (EE)
- THEORY OF KNOWLEDGE (TOK)

# Core of Diploma Programme

(all candidates must complete)

## The Extended Essay:

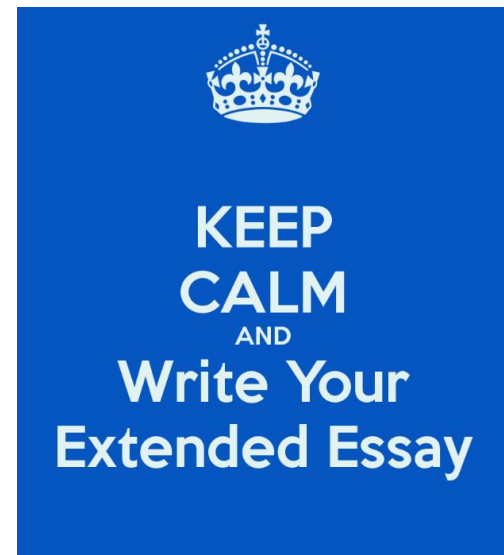
- 4,000 word paper
- Offers the opportunity to investigate a research question of individual interest
- Begin Junior year and complete paper Senior year.
- AN EE Supervisor is assigned

## Creativity, Activity and Service (CAS):

- Encourages and requires ongoing student involvement in artistic pursuits, sports, and community service
- Education outside the classroom
- Planning, journaling and hours required

## The Theory of Knowledge course:

- Explores the nature of knowledge across disciplines.
- Encouraging an appreciation of other cultural perspectives.
- Presentation and essay assessment



# How are International Baccalaureate students assessed?

Diploma Programme assessments include both external assessments and internal assessments.

-*Internal assessments (IAs)* are examinations and projects that are graded by teachers according to IB criteria.

-These scores are externally moderated by IB in order to maintain fairness and accuracy in scoring.

-*External assessments (EAs)* are final examinations and projects that are graded by IB examiners all over the world.

-All 4,000 examiners are 'quality checked' through a process of moderation.

IB assessments are rigorous, criterion-related, consistent, and differentiating of student ability.

# Examples of IB Assessments

## Internal Assessments

- Research projects and proposals
- Writing assignments
- Oral commentaries or presentations

***Students largely choose their own topics for Internal Assessments.***

## External Assessments

- Writing assignments
- Final examinations

***Final examinations take place at the end of each school year.***

***A combination of scores from Internal Assessments and External Assessments make up a student's examination score (1-7) for each subject area. These scores qualify a student for an IB Diploma.***



# William T. Dwyer High School

## THE IB DIPLOMA PROGRAMME ASSESSMENTS

All subjects are graded on a scale of 1 – 7  
 A minimum of 24 points are necessary to earn the IB Diploma.  
 Six subjects—3 Higher Level, 3 Standard Level  
 \*A second course 2-5 may be used as Group 6  
 12 points must be earned at the HL.

**Class of 2023+**

### Language A1--Group 1

English Literature	HL
Paper 1 (Commentary)	35%
Paper 2 (Comparison)	25%
HL Essay	20%
IA Oral Commentary	20%

### Individuals & Societies--Group 3

History of the Europe	HL
Paper 1	20%
Paper 2	25%
Paper 3	35%
IA Essay	20%

### Business Management

	SL*	HL
Paper 1	35%	25%
Paper 2	35%	30%
Paper 3		25%
Project	30%	20%

### Psychology

	SL*	HL
Paper 1	50%	40%
Paper 2	25%	20%
Paper 3		20%
IA Experimental Study	25%	20%

\*Offered for 1 year

### Language B--Group 2

#### Spanish and French

	SL	HL
Paper 1	25%	25%
Paper 2 (Listening)	25%	25%
Paper 2 (Reading)	25%	25%
Individual Oral	25%	25%

### Experimental Sciences--Group 4

Biology	SL	HL
Paper 1	20%	20%
Paper 2	32%	36%
Paper 3	24%	20%
IA Labs and	24%	24%

Chemistry	SL	HL
Paper 1	20%	20%
Paper 2	32%	36%
Paper 3	24%	20%
IA Labs and	24%	24%

Environmental Systems & Societies	SL*
Paper 1	30%
Paper 2	50%
IA Labs	20%

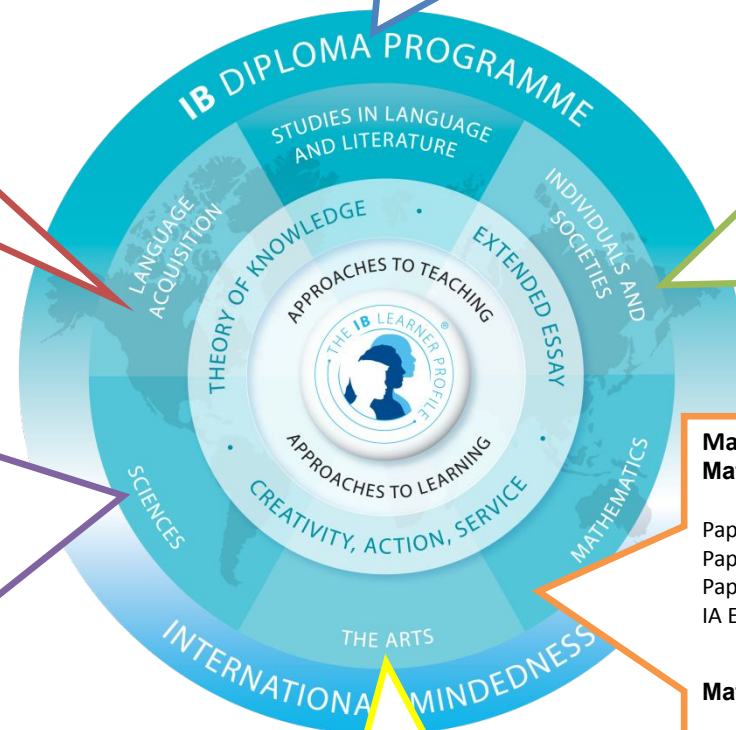
•Offered as a 2-year SL course

IB Physics	SL/HL
Paper 1	20%
Paper 2	36%
Paper 3	24%
Investigation	20%

\*New Biology/Chemistry/Physics beginning with DP candidates who will enter Junior year in the 2023-2024 school year

### Arts & Electives--Group 6\*

Visual Arts	SL
Comparative Study	20%
Process Portfolio	40%
Exhibition	40%



### Mathematics--Group 5

#### Mathematics: Analysis and approaches

	SL	HL
Paper 1	40%	30%
Paper 2	40%	30%
Paper 3		20%
IA Exploration	20%	20%

#### Mathematics: Applications and interpretation

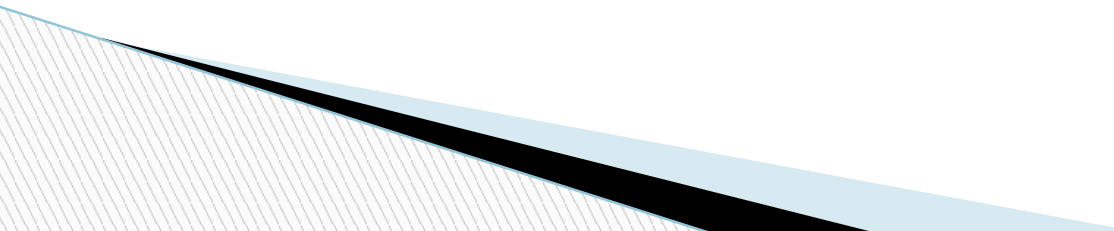
	SL
Paper 1	40%
Paper 2	40%
Project	20%

**Mathematics: Applications and interpretation** – for students interested in social sciences, natural sciences, medicine, statistics, business, engineering, some economics, psychology, and design.

**Mathematics: Analysis and approaches** - for students interested in mathematics, engineering, physical sciences, and some economics



# Earning the IB Diploma

- Students must score a minimum of **24 points out of 45 points**
  - Marks awarded for each course range from 1 (lowest) to 7 (highest).
  - Must earn a minimum of 12 points on higher level tests
  - Must earn a minimum of 9 points on standard level tests
  - There is no score of 1 in any subject.
  - There are no more than two scores of 2.
  - Overall, there are no more than three scores of 3 or below.
  - CAS must be completed.
  - TOK and EE must earn a passing score.
  - Up to three extra points toward the IB Diploma may be achieved from a combination of scores for TOK and EE.
- 

# IB Diplomas Awarded 2013-2022

<u>Year</u>	<u>Attempted</u>		<u>Awarded</u>
2023	64	80	80%
2022	57	49	78.9%
2021	72	63	87.5%
2020	76	67	88%
2019	63	54	85%
2018	55	49	89%
2017	47	43	91%
2016	42	40	95%
2015	35	34	97%
2014	35	32	91%
2013	18	15	83%

## Bright Futures Scholarships:

Students who earn an IB Diploma, and complete 100 hours of community service, will earn the Florida Academic Scholars Award.

# How well is the IB Diploma recognized by universities?

The IB Diploma is widely recognized by the world's leading universities.

The IB Diploma is recognized in over 100 countries, and by over 2,000 universities.

Many universities offer scholarships and advanced placement for IB students.

*“The IBDP is one of the best programs of study available. We offer Advanced Standing graduation in three years-based on 6s and 7s in IB. Because we know the IB so well, a “B” in an IB course carries weight with our Admissions Committee.”*

**-William R. Fitzsimmons**

**Dean of Admissions and Financial Aid**

**Harvard University**



# Entry requirements and application process

Acceptance rates for the 20 most popular institutions among survey respondents

[www.i-graduate.org](http://www.i-graduate.org)

University or college	IB candidates acceptance rate	Total population acceptance rate	IB candidates versus total population (percentage points)
University of Florida	82%	42%	+40%
Florida State University	92%	60%	+32%
Brown University	18%	9%	+9%
Stanford University	15%	7%	+8%
Columbia University	13%	9%	+4%
University of California - Berkeley	58%	26%	+32%
Harvard University	10%	7%	+3%
New York University	57%	30%	+27%
University of Michigan - Ann Arbor	71%	51%	+20%
University of Miami	72%	30%	+42%
Cornell University	31%	18%	+13%
Duke University	28%	16%	+12%
University of Pennsylvania	24%	14%	+10%
Yale University	18%	7%	+11%
University of Central Florida	90%	47%	+43%
Boston University	70%	58%	+12%
University of California - Los Angeles	48%	23%	+25%
University of Virginia	64%	32%	+32%
UNC Chapel Hill	63%	32%	+31%
Princeton University	16%	8%	+8%

# University Acceptances for William T. Dwyer IB Students

American University  
Boston College  
Clemson  
Dartmouth  
Elon University  
Florida Gulf Coast  
Georgia Tech  
Howard University  
Lehigh University  
New College of Florida  
Nova Southeastern  
Penn State  
St. Joseph's  
The Juilliard School  
University of Alabama  
University of Chicago  
University of Georgia  
University of Indiana  
University of Mass.  
University of North Florida  
University of Pittsburgh  
University of St. Andrews  
University of Wis., Madison

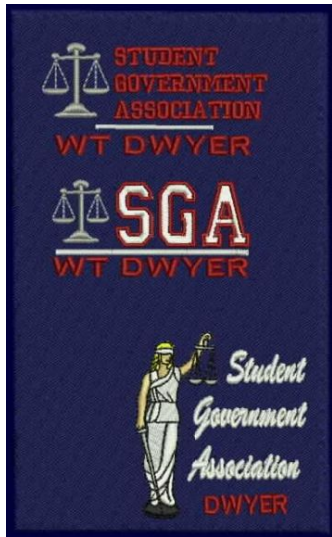
Auburn University  
Boston University  
Columbia University  
Drexel University  
Emory University  
Florida State University  
George Washington  
Indiana University  
McGill University  
North Carolina State  
Ohio State  
Providence College  
St. Mary's  
Trinity College  
University of California – Berkeley  
University of Colorado  
University of Glasgow, Scotland  
University of Kansas  
University of Miami  
University of Notre Dame  
University of S. Carolina  
University of Texas  
Vanderbilt

Bard College  
Brandeis University  
Cornell University  
Duke University  
Florida Atlantic University  
Fordham University  
Harvard University  
Kenyon College  
New York University  
Northeastern University  
Oxford College  
Purdue  
Texas A&M University  
Tulane  
University of Florida  
University of Manchester, UK  
University of New Hampshire  
University of Oklahoma  
University of S. California  
University of Virginia  
Villanova

# What are IB students like?



# What are IB students like?



# Why should I choose the International Baccalaureate Programme at William T. Dwyer High School?

- William T. Dwyer's diverse and enriching learning environment
- Opportunity to explore your interests, skills, and talents
- The rigor and prestige of the International Baccalaureate Programme
- Guaranteed preparation for university life and beyond
- IB's comprehensive and globally-focused course of study
- An emphasis on personal growth inside and outside of the classroom







### **For Additional Information**

Deanna Schneider, IB Coordinator

William T. Dwyer High School

13601 N. Military Trail

Palm Beach Gardens, FL 33418

561-625-7800, [deanna.schneider@palmbeachschools.org](mailto:deanna.schneider@palmbeachschools.org)

### **Visit:**

<https://www.ibo.org/programmes/diploma-programme/>

<https://wtdh.palmbeachschools.org/>

<https://www.palmbeachschools.org/Page/9378>